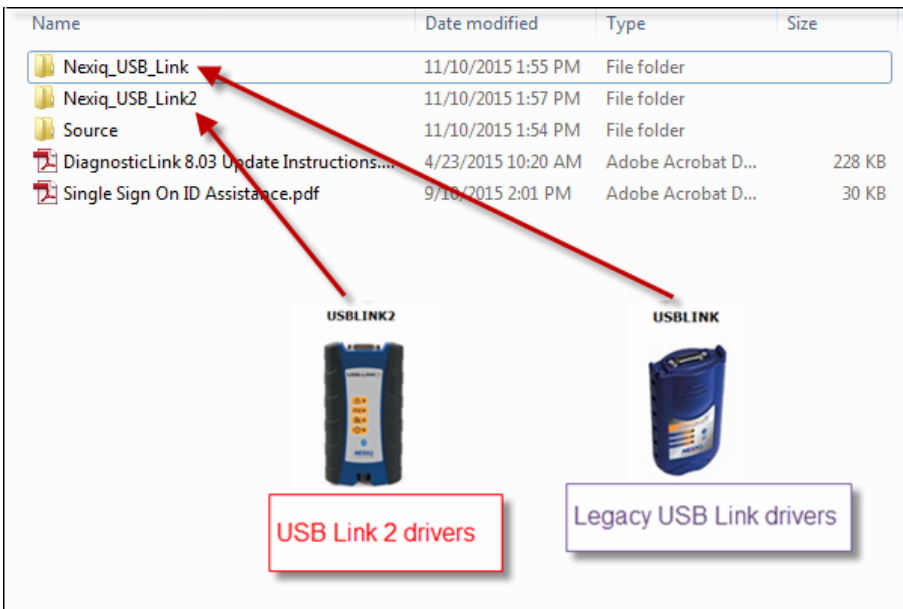


DiagnosticLink 8 Setup Instructions

1. Remove previous version of DiagnosticLink. Click **Start, Control Panel, and Uninstall Programs**.
2. Select **DiagnosticLink** from program list and click **Uninstall**:

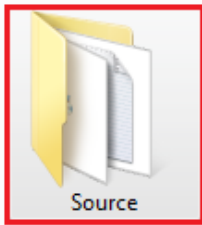


3. Install latest device drivers by opening the appropriate USB-Link folder. (E.g., to install the Nexiq USB-Link2 drivers, open the Nexiq USB-Link2 folder).
4. Right-click **USB-Link2_2.2.0.19.exe** and Run as Administrator. Follow setup guide to complete installation.

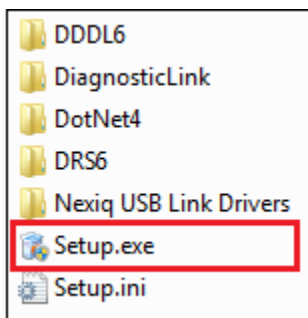


Self-Serve Access

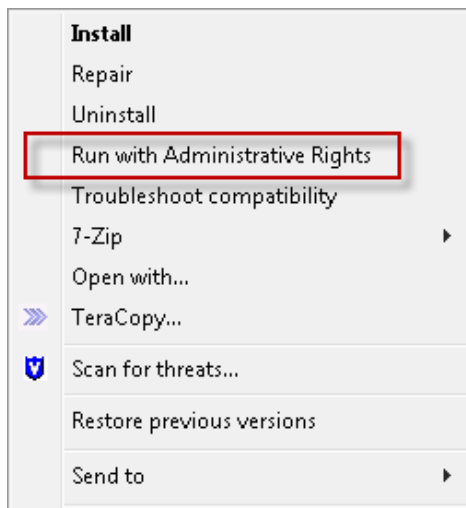
5. Install DiagnosticLink. From Self-Serve, double click on the **Source** folder:



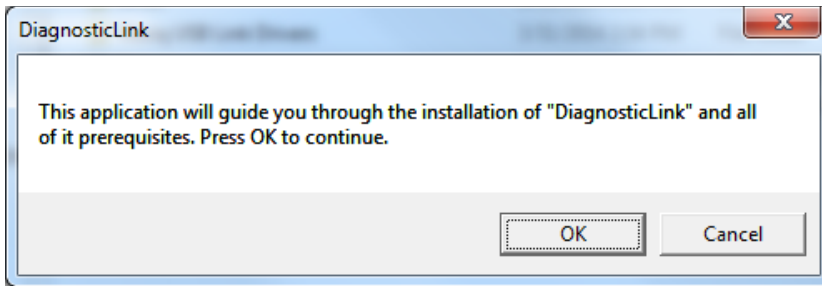
6. Right click **Setup.exe**



7. Select Run with Administrative Rights

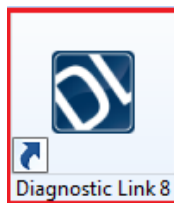


8. Click OK to continue with Setup

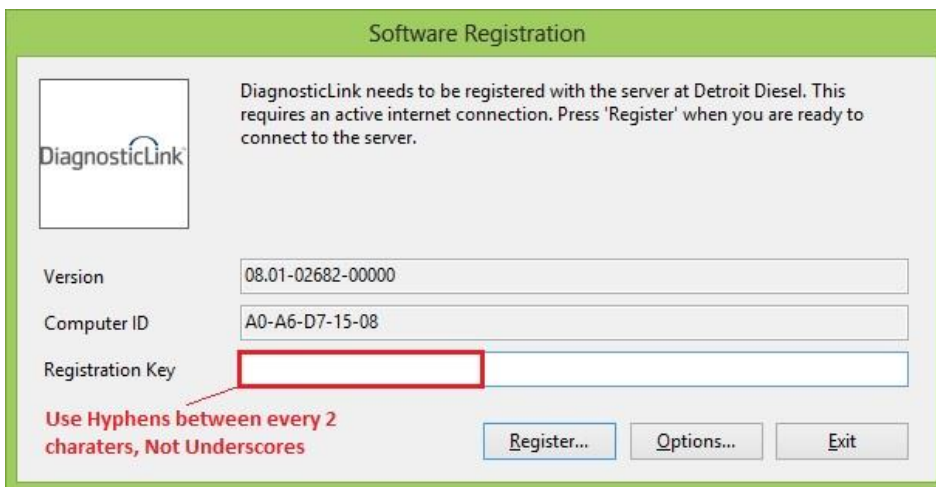


9. Click Next to the Welcome Screen and follow installation procedures to install: DiagnosticLink 8, DRS 6.30, and DDDL 6.50.

10. Launch DiagnosticLink 8 by double clicking the icon from desktop.

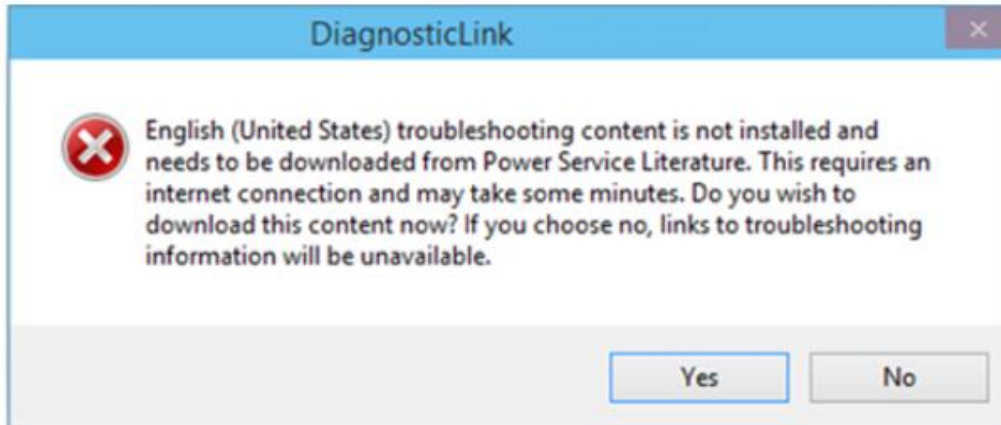


11. If upgrading from a previous version, leave registration key field blank and click register. If this is a new installation, enter registration key and click register.
 - a. Use **Hyphens** in between every 2 characters. (E.g. **DDDD-P000-0000**). Do Not use underscore (E.g. **DDDD_P000_0000**).
 - b. If you cannot locate your registration key, send an email request SSD@daimler.com with the Computer ID.

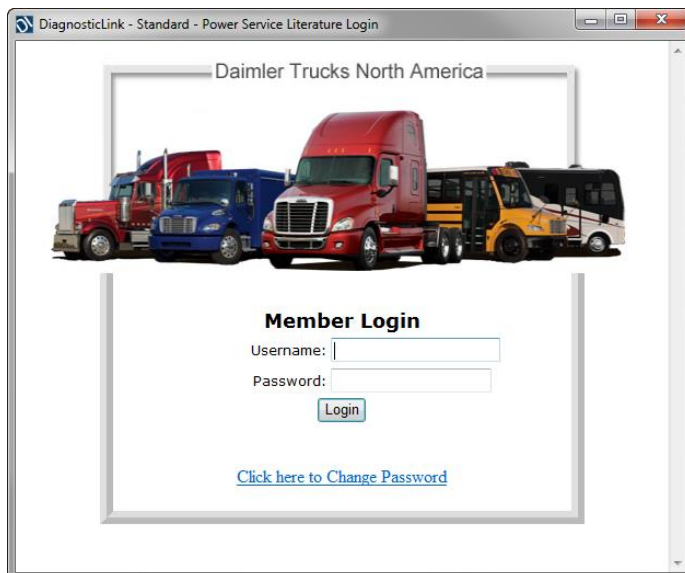


Self-Serve Access

12. When prompted, Enter SSO (single sign-on) ID and password and click OK.
13. If prompted to download updates (e.g. service packs), follow instructions to install.
14. Click Yes to agree to download troubleshooting content

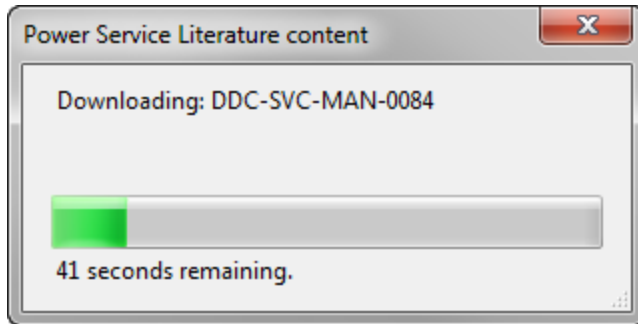


15. Enter SSO ID and password to login to PSL



The DiagnosticLink Troubleshooting manuals will begin to download from PSL.

Self-Serve Access



The DiagnosticLink setup is now complete

For Corporate SSO ID Assistance, please contact Corporate Help Desk:

503-745-8001 option 3

Or use the corporate password reset link below:

https://cism-web.es.corpintra.net/cgi-bin/webTickets/webTicket.pl?t=DTNA_Password_Reset